

Living, Loving and Learning in Jesus

Our school is clear in our beliefs and values, and the importance of Jesus Christ in our daily lives. Our Mission Statement underpins all we do:

“Living, Loving and Learning in Jesus.”

OLBE is a place of love and learning, where all are equal in the eyes of God. It is the mission of this school to cherish each individual. We try to follow Jesus’ example as a friend and guide. We believe that there are talents and strengths within us all, and we strive to let them shine brightly.

Children in our school are guided to use Jesus’ life as the basis to reflect upon their actions. Our mission statement promotes good discipline within a calm, reflective atmosphere which enables the children to get to know themselves better and develop a sense of responsibility for their own lives and happiness.

As a result, our children are part of a caring, Catholic community within which all feel secure, valued and respected.

Welcome to Y5



Staff



Miss Gilbert
Mrs Brown
Mrs Bailey



Punctuality

- The school day starts at 8.55am. Children can come into school from 8.40am.
- When the main school doors close at 8.55, children who enter school via the school office are recorded as late.
- Punctuality is recorded and tracked by our Safeguarding Team
- **Please support your child in ensuring that they have the best start to the school day by being on time and ready to learn.**



Attendance

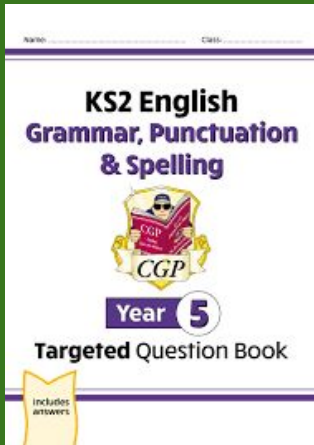
- Our school target is 100% attendance. The Government national standard for attendance remains at 97% and above.
- Absences through illness are authorised.
- As part of our ongoing Safeguarding monitoring, school makes contact with parents if there is no explanation as to why a child is not in school by 9.15am on the first day of absence.
- Holidays are not authorised during term times and will be recorded as unauthorised absences.
- Parents are asked to please report absence to the school office via email, Parent App or a phonecall.



Attendance Monitoring

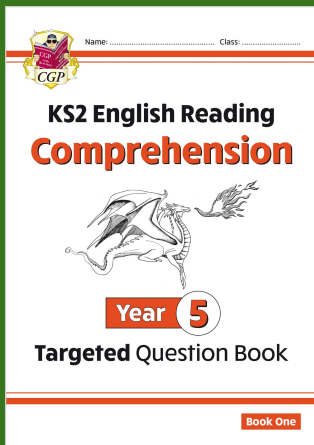
97% and above		Attendance Award
94-96%		School Monitoring
91-93%	At Risk of Persistent Absence	Letter to notify parents of risk of falling into Persistent Absenteeism. Support will be offered.
90% and below	Persistent Absenteeism	Communication to notify parents of Persistent Absenteeism and invitation to meet with school to plan shared strategy to improve attendance.

Year 5 Homework



Grammar and comprehension CGP books are sent home *every Monday*.

The children record the date that this needs to be returned - this will be a Monday.



The children have taken home a complete spelling booklet for the term.

They can keep this at home.

Spellings will be introduced in class and expected to be practised at home.

Spellings will then be tested the following week on either Monday or Tuesday.



We understand that everybody's schedules and demands are different which is why we give a full week. Everybody is expected to have a go at home and it can really affect lessons and reviews of homework if it hasn't been completed.

Year 5 Homework

Any child who has a reading book selected by us, should return it once completed for the book to be changed.

Maths No Problem workbooks will also continue to come home on a Friday. Please ensure this is returned every Monday.

TT Rockstars - we encourage children to use this frequently at home!

Reading

Your child will have brought home a reading record book.

Children are expected and encouraged to read every evening.

They should have their reading record book in their bag every day.

Your child will be asked to journal:

- **The name of the book they are reading**
- **The pages they have read that evening**
- **The rating /10 they'd give the book.**

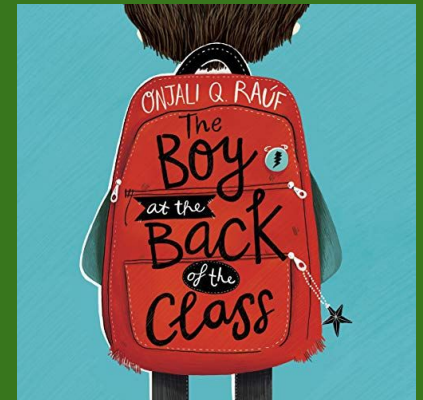
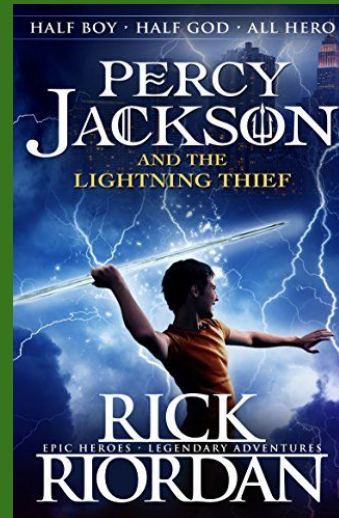
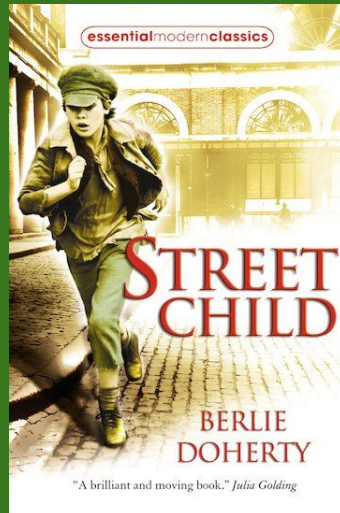
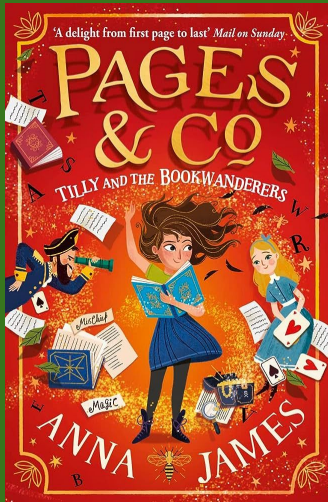
We ask that you sign this reading record weekly.

We also encourage you to read with your child frequently and discuss the books they enjoy.

Reading for pleasure - both in school and at home

We encourage all children to enjoy a variety of texts (fiction, non-fiction, poetry, magazines, comics etc...) at home and we would love to hear about anything interesting they read!

As a class, we will be enjoying:



Handwriting

All KS2 children are expected to use this pen in school.



UKS2 Expectations

Our expectations reflect our school
values

Presentation

Pride

Respect

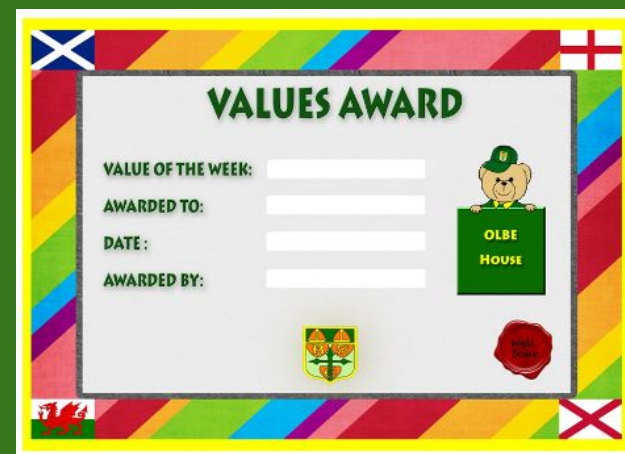
Responsibility

Resilience



OLBE House Points

St. Andrew	St. David
St. George	St. Patrick



P.E.

Year 5 P.E. days are Thursdays and Fridays.


Swimming will begin in the Spring term, after Christmas.



twi

Bikeability

This will occur in the spring term and dates will follow - we will keep you informed.

[Log In](#)[Register](#)[Home](#)[Courses ▾](#)[Your Borough ▾](#)[HAF Programme](#)[Cycle Instructor Training](#)[Schools](#)[Work With Us](#)[About Us](#)[Contact](#)

A future where everyone has the confidence to cycle as part of leading healthy, active lives

Something to look forward to:



● On display

Return of the Gods

28 Apr 2023—25 Feb 2024

Prepare for the high drama of the ancient world as we meet the gods and goddesses of Mt. Olympus. Their lives were packed with great loves, greater feuds and the powers to influence, save or condemn human lives for ever.

📍 **World Museum**

Date to be confirmed - more details to follow.